



Dornseiff ▶

So viel Kraft muss sein.



Burbach • Olpe • Siegen • Wetzlar

MRK 2,4 to.














Dornseiff Arbeitsbühnen GmbH & Co. KG




Wiesacker 1, D-57299 Burbach | Telefon: +49 2736 4411 20 | Telefax: +49 2736 4411 21




arbeitsbuehnen@dornseiff.eu | www.dornseiff-arbeitsbuehnen.eu



	SPX424CDH	2030
	Abnehmbares Gewicht	200
	2.5T-D7	20
	PP400-4DX	45
	JIB800GX JIB800.1MX JIB800.1H1 MV600.3E	25 110 140 200

	Inklusive hydraulisch verstellbares Kettenfahrwerk	 2400 kg
	3160 x 780 x 1875 mm	 11,9 m
	3740 x 3740 mm	 15,0 m

	800 kg 73 m - Ø 7 mm 21-42 m/min	
		
2400 kg	3	-20 m
1600 kg	2	-32 m
800 kg	1	-65 m



	KUBOTA D722E3B
	14,9kW 20Hp
	24 V / 240 Ah 4kW - 3F 400 VAC 50 Hz



	360° / 1,5 U/min
---	------------------

	2,6 m - 8,5 m / 26 sek.
---	-------------------------

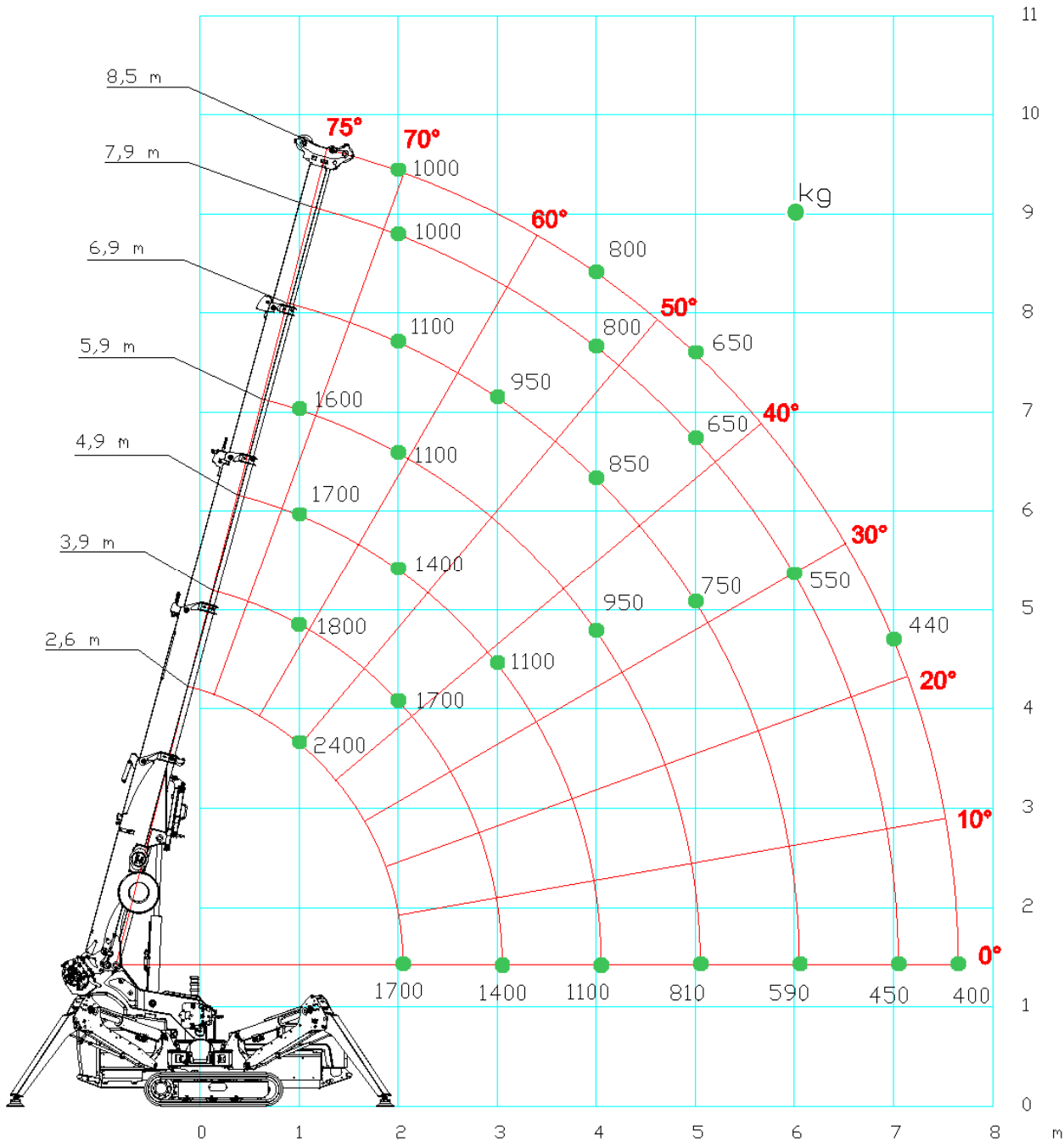
	0°/75° / 14 sek.
---	------------------


	2200 kg
---	---------


	3160 x 1065 x 1956 mm
	20°


	0,55 kg/cm²
	1,8 km/h


Hauptausleger



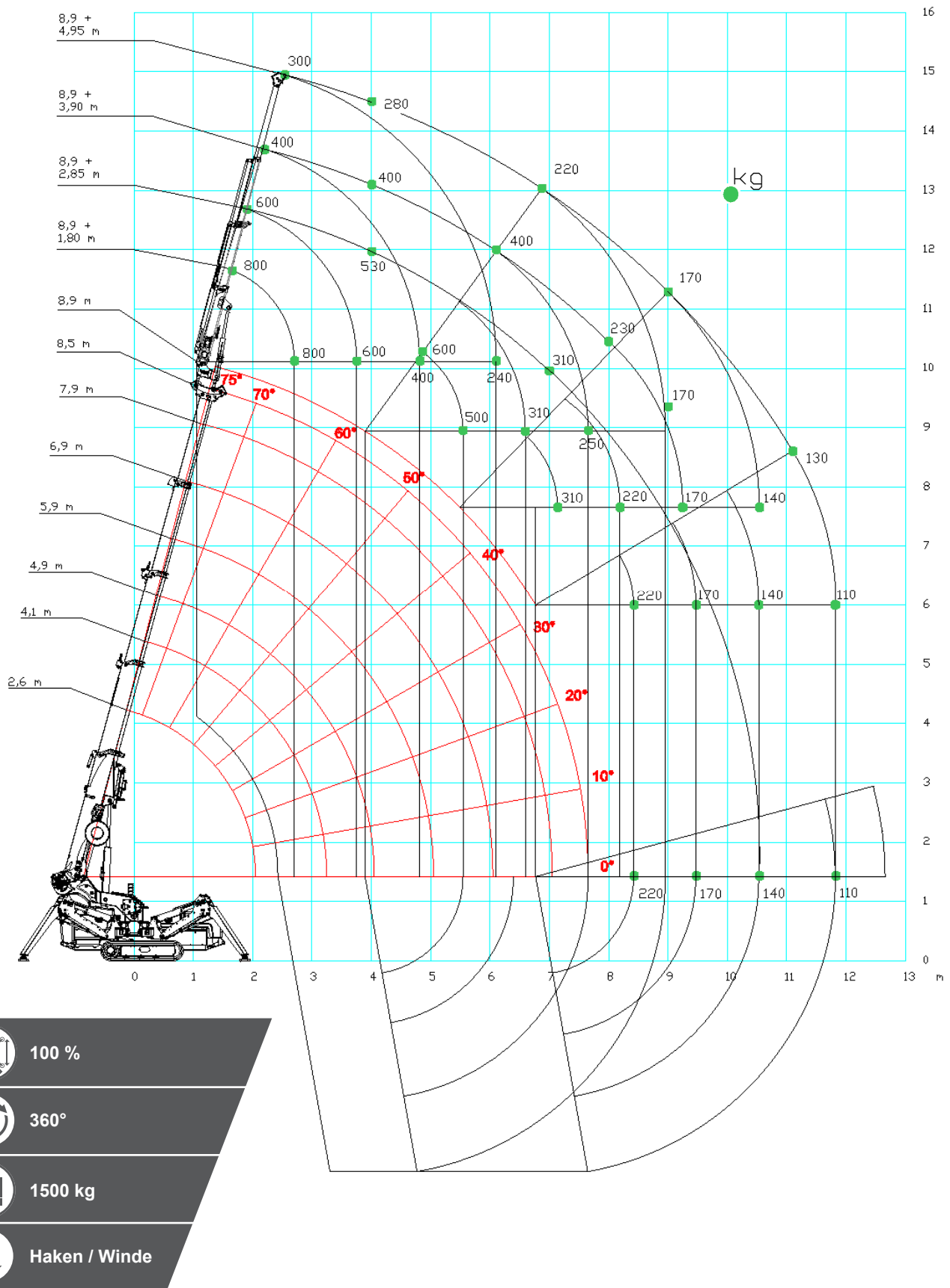
**100%**

**360°**

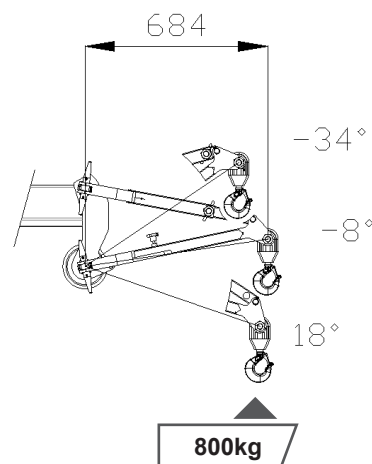
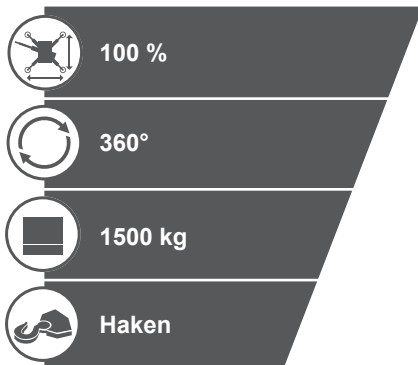
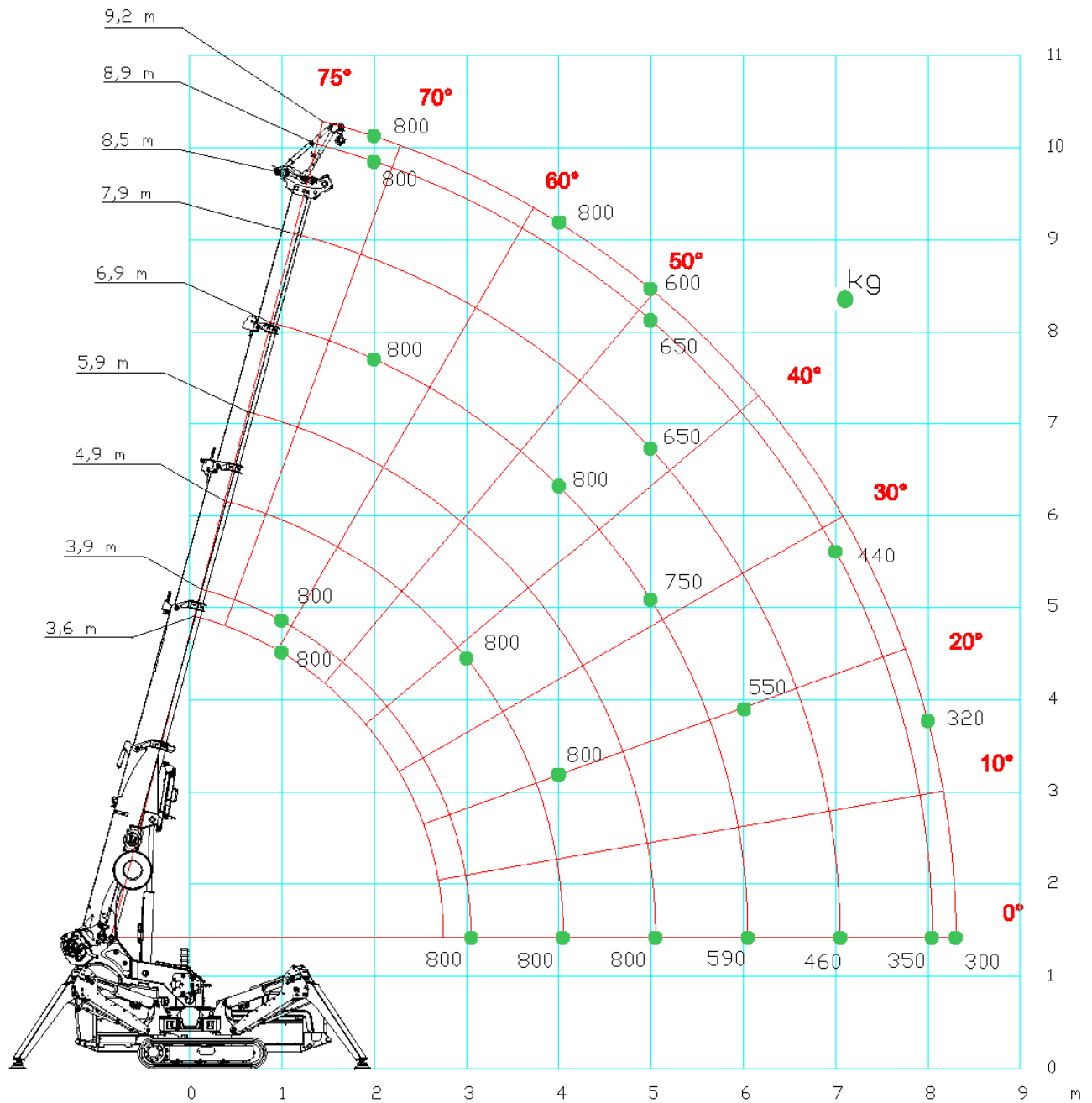
**200 kg**

**Winde**

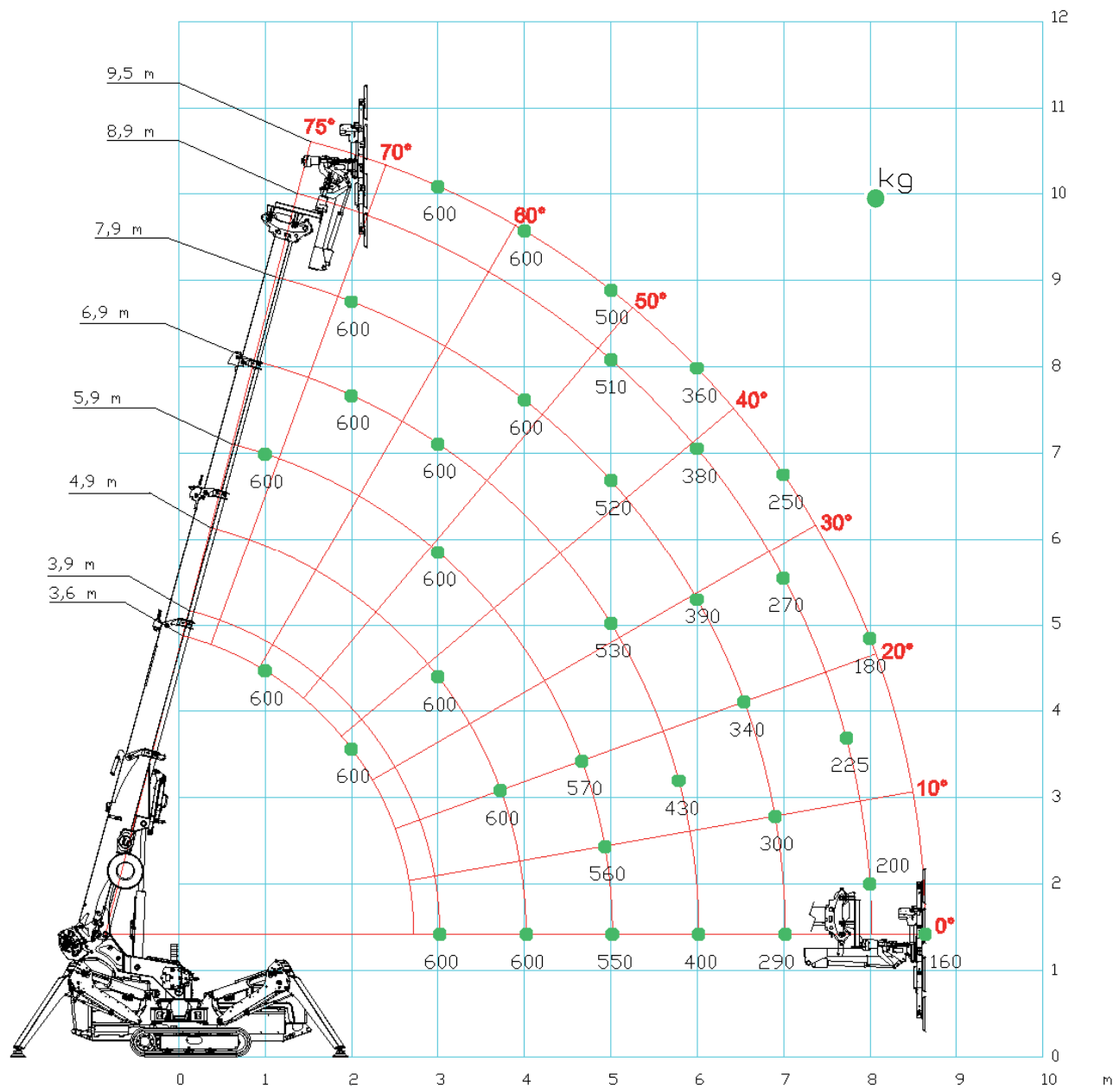
Hakenmodus mit JIB800.2H1MX



JIB800GX

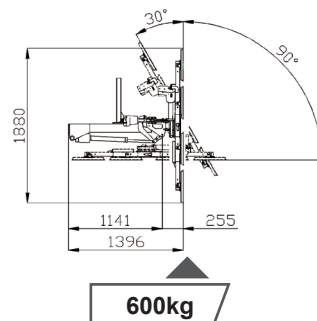


MV600.3E

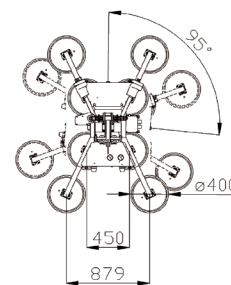


- 100%
- 95°
- 600 kg
- Manipulator

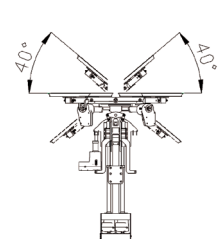
Kippposition

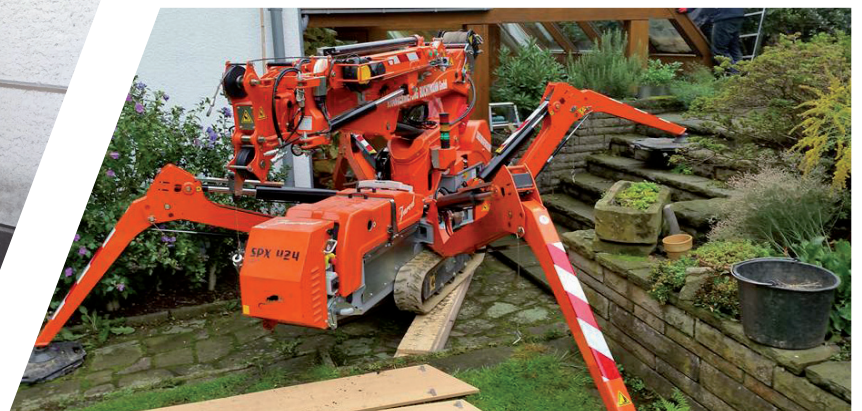


Drehposition



Schwenkposition





Sicheres Heben auf engstem Raum.



Burbach • Olpe • Siegen • Wetzlar

Dornseiff Arbeitsbühnen GmbH & Co. KG

Wiesacker 1, D-57299 Burbach

Telefon: +49 2736 4411 20

Telefax: +49 2736 4411 21

arbeitsbuehnen@dornseiff.eu

www.dornseiff-arbeitsbuehnen.eu



Alle technischen Angaben unter
Vorbehalt nach Datenstand 04.2016.